

**LAND CERTIFICATE NO. 44050 COPY**

Land Certificate No. 44050 Tulcea

**A. Part I. Property description LAND**

within the built-up area

Address: Loc. Tulcea, Jud. Tulcea, STRADA VICTORIEI

Item no.	Cadastral number Topographic number	Surface* (sqm)	Observations / References
A1	44050	14,649	Unfenced land;

**B. Part II. Owners and documents**

Entries regarding property rights and other real rights		References
61508 / 02/08/2018		
Administrative Act no. 109, dated 26/04/2018 issued by the LOCAL COUNCIL OF TULCEA MUNICIPALITY; Administrative Act no. 133, dated 30/10/2008 issued by the LOCAL COUNCIL OF TULCEA MUNICIPALITY; Administrative Act no. 137981, dated 19/10/2018 issued by the TULCEA MUNICIPALITY; Normative Act no. 1360, dated 27/10/2001 issued by the Romanian Government; Administrative Act no. 15506, dated 17/10/2018 issued by the TULCEA LOCAL COUNCIL;		
B1	Provisional registration, right of PROPERTY according to art. 41, para. 5, index 1 of Law no. 7/1996 republished, with subsequent additions and changes, acquired by Law, current share 1/1, initial share 1/1	A1
1) TULCEA MUNICIPALITY, CIF (Fiscal Identification Code): 4321429, public domain		
77306 / 05/07/2023		
Normative Act no. 1360, from 27/12/2001 issued by the GOVERNMENT OF ROMANIA; Administrative Act no. 9244, dated 29/06/2023 issued by TULCEA TOWN HALL; Administrative Act no. 125, dated 12/07/2001 issued by the LOCAL COUNCIL OF TULCEA MUNICIPALITY;		
B2	It is noted the conclusion of the rejection of this request	A1

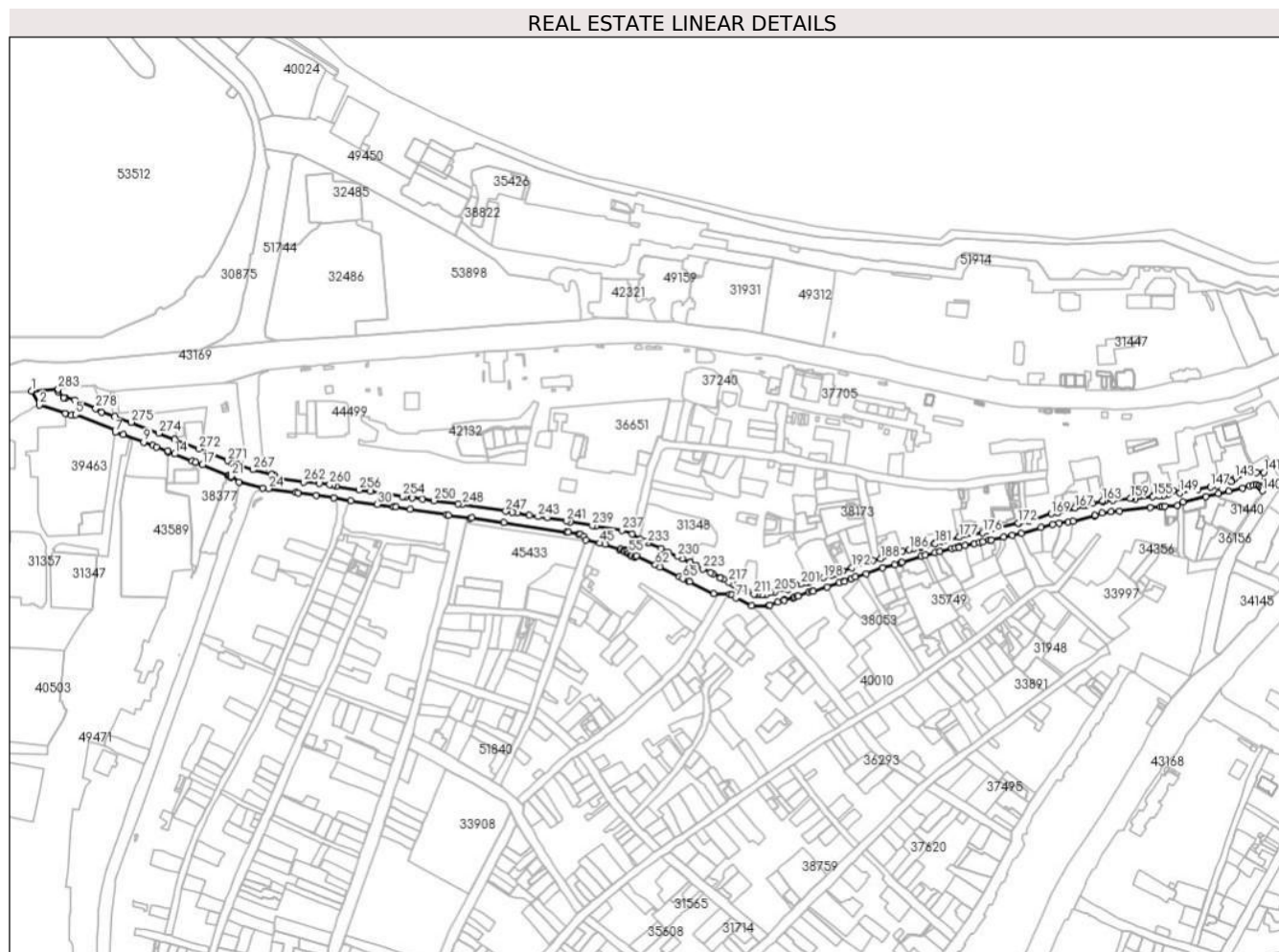
**C. Part III. ENCUMBRANCES.**

Entries regarding dismemberment of property rights, real rights of guarantee and encumbrances	References
NOT EXISTING	

## Land

Cadastral no.	Surface (sqm)*	Observations / References
44050	14,649	

\* The surface is determined in the Stereo 70 projection plane.



## Land related data

Item no.	Usage category	Land within the built-up area	Surface (sqm)	Strip land	Lot	Topographical no.	Observations / References
1	road	YES	14,649	-	-	-	

## Segments length

1) The segment length values are obtained from the plan projection.

Start point	End point	Segment length	Start point	End point	Segment length	Start point	End point	Segment length
1	2	15,469	2	3	26,605	3	4	6,246
4	5	3,623	5	6	41,812	6	7	1,665
7	8	8,186	8	9	20,849	9	10	9,512
10	11	3,518	11	12	12,244	12	13	0,881
13	14	7,201	14	15	18,163	15	16	3,374
16	17	7,211	17	18	26,712	18	19	1,505
19	20	1,405	20	21	1,213	21	22	9,394
22	23	23,445	23	24	5,784	24	25	26,846

Start point	End point	Segment length	Start point	End point	Segment length	Start point	End point	Segment length
25	26	2,188	26	27	17,697	27	28	16.92
28	29	16,708	29	30	25.94	30	31	15.82
31	32	2.29	32	33	14,047	33	34	35,442
34	35	1,971	35	36	20,801	36	37	1,956
37	38	31,134	38	39	61,583	39	40	1.45
40	41	10,231	41	42	1,641	42	43	4,143
43	44	3,564	44	45	14,064	45	46	5,045
46	47	15,066	47	48	1,586	48	49	3,153
49	50	0,977	50	51	1,073	51	52	2,182
52	53	0,847	53	54	2,486	54	55	0,873
55	56	2,267	56	57	1,269	57	58	0,568
58	59	3,005	59	60	1,514	60	61	0,888
61	62	20.47	62	63	5.21	63	64	20,663
64	65	3,749	65	66	5,855	66	67	1.59
67	68	25,529	68	69	16,082	69	70	1,452
70	71	5,281	71	72	16,954	72	73	16,684
73	74	1,148	74	75	8,258	75	76	6,283
76	77	0,533	77	78	8,841	78	79	1,316
79	80	3,076	80	81	0,587	81	82	11,038
82	83	3,063	83	84	1,051	84	85	14.39
85	86	12,451	86	87	4,908	87	88	0,794
88	89	7,238	89	90	0,081	90	91	4.34
91	92	10,675	92	93	16,544	93	94	12,543
94	95	5,906	95	96	1.1	96	97	19.91
97	98	4,262	98	99	9,349	99	100	4,701
100	101	12,038	101	102	3,442	102	103	3,872
103	104	0,566	104	105	6,011	105	106	8,742
106	107	5,378	107	108	3,139	108	109	6,421
109	110	1,939	110	111	12,419	111	112	8,604
112	113	8,995	113	114	19,497	114	115	11,554
115	116	6,551	116	117	8,903	117	118	4,598
118	119	21,859	119	120	0,639	120	121	7,126
121	122	9,021	122	123	7,953	123	124	29.95
124	125	10.23	125	126	1,267	126	127	2,751
127	128	12,244	128	129	6,248	129	130	22,928
130	131	12,585	131	132	9,835	132	133	13,918
133	134	7,268	134	135	3,811	135	136	2,872
136	137	2,526	137	138	2,477	138	139	1,588
139	140	2,187	140	141	17,754	141	142	7,013
142	143	21,904	143	144	3,618	144	145	0,791
145	146	14,045	146	147	7,046	147	148	12,048
148	149	17,772	149	150	7,362	150	151	4,947
151	152	2,718	152	153	4,572	153	154	4,354
154	155	5,923	155	156	0.89	156	157	16,655
157	158	4.42	158	159	0,875	159	160	16,458
160	161	7,876	161	162	2,523	162	163	0,375
163	164	10,015	164	165	6,042	165	166	2,972
166	167	8,125	167	168	17,809	168	169	5,794
169	170	22,893	170	171	9,653	171	172	0,865
172	173	24,347	173	174	6,866	174	175	1,499
175	176	3,018	176	177	23,475	177	178	14,286
178	179	3,532	179	180	5,956	180	181	0,647
181	182	8.9	182	183	4,775	183	184	0,467
184	185	7.44	185	186	4,749	186	187	6,736
187	188	22,252	188	189	7,731	189	190	4,351
190	191	3,893	191	192	13,275	192	193	8,746

Start point	End point	Segment length	Start point	End point	Segment length	Start point	End point	Segment length
193	194	4,155	194	195	3,101	195	196	0.86
196	197	3.81	197	198	8,669	198	199	14,577
199	200	2,668	200	201	5,324	201	202	4,831
202	203	7,767	203	204	3.47	204	205	13,319
205	206	3,488	206	207	5,737	207	208	3,569
208	209	4,044	209	210	2,584	210	211	1,427
211	212	7,147	212	213	8,709	213	214	0,883
214	215	5,014	215	216	1,591	216	217	3,617
217	218	5,726	218	219	3,318	219	220	0,257
220	221	8.08	221	222	2,763	222	223	8,029
223	224	8,082	224	225	0,445	225	226	6,069
226	227	0,334	227	228	0.35	228	229	8,383
229	230	5,158	230	231	10,398	231	232	6,884
232	233	13,711	233	234	3,632	234	235	5,101
235	236	9,399	236	237	10,424	237	238	24,969
238	239	3,994	239	240	21,356	240	241	4,065
241	242	18,748	242	243	8.84	243	244	8,477
244	245	11,807	245	246	4,849	246	247	6,494
247	248	42,335	248	249	4,545	249	250	23,087
250	251	11,212	251	252	10,157	252	253	6.52
253	254	3.06	254	255	31,275	255	256	10,839
256	257	22,652	257	258	2.94	258	259	0,462
259	260	3,561	260	261	10,074	261	262	15,265
262	263	25,777	263	264	3,215	264	265	1,842
265	266	2,645	266	267	18,575	267	268	15,487
268	269	3,055	269	270	3,058	270	271	4.47
271	272	29.64	272	273	25,326	273	274	16,681
274	275	28,472	275	276	17,085	276	277	12.88
277	278	7.0	278	279	21,681	279	280	9,346
280	281	1,704	281	282	7.63	282	283	2.54
283	1	25,805						

\*\* Segment lengths are determined in the Stereo 70 projection plane and are rounded to 1 millimeter.

\*\*\* The distance between the points is made up of cumulative segments that are smaller than the value of 1 millimeter.